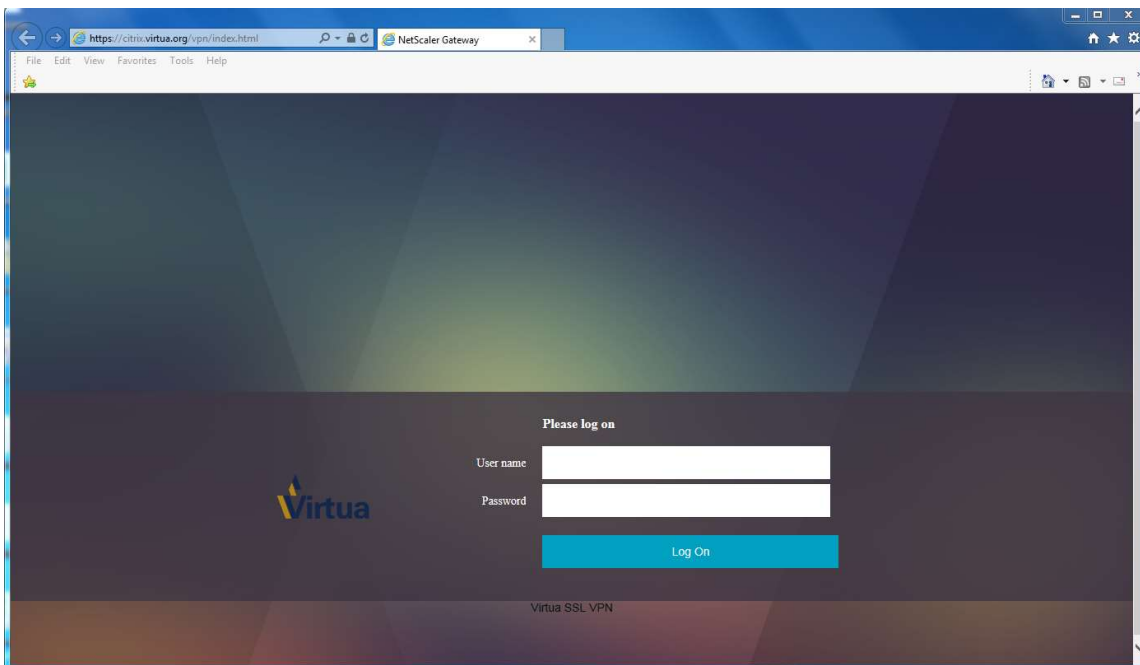


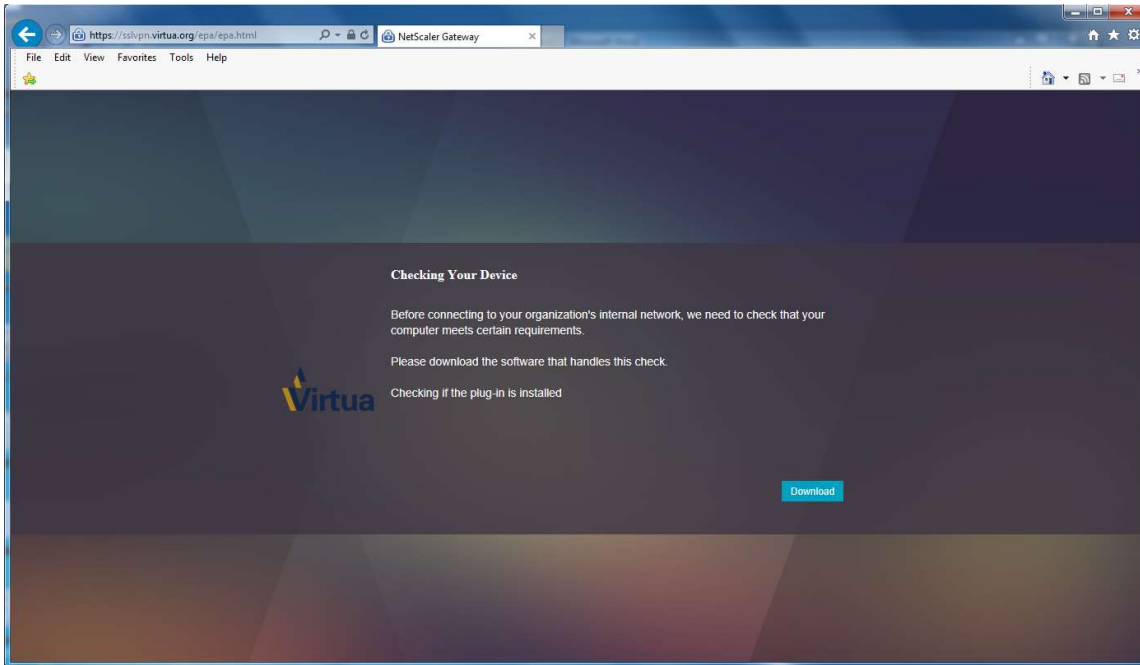
**To connect to Virtua VPN:**

Browse to <https://citrix.virtua.org>.

1. Click on the link for Virtua SSL VPN.



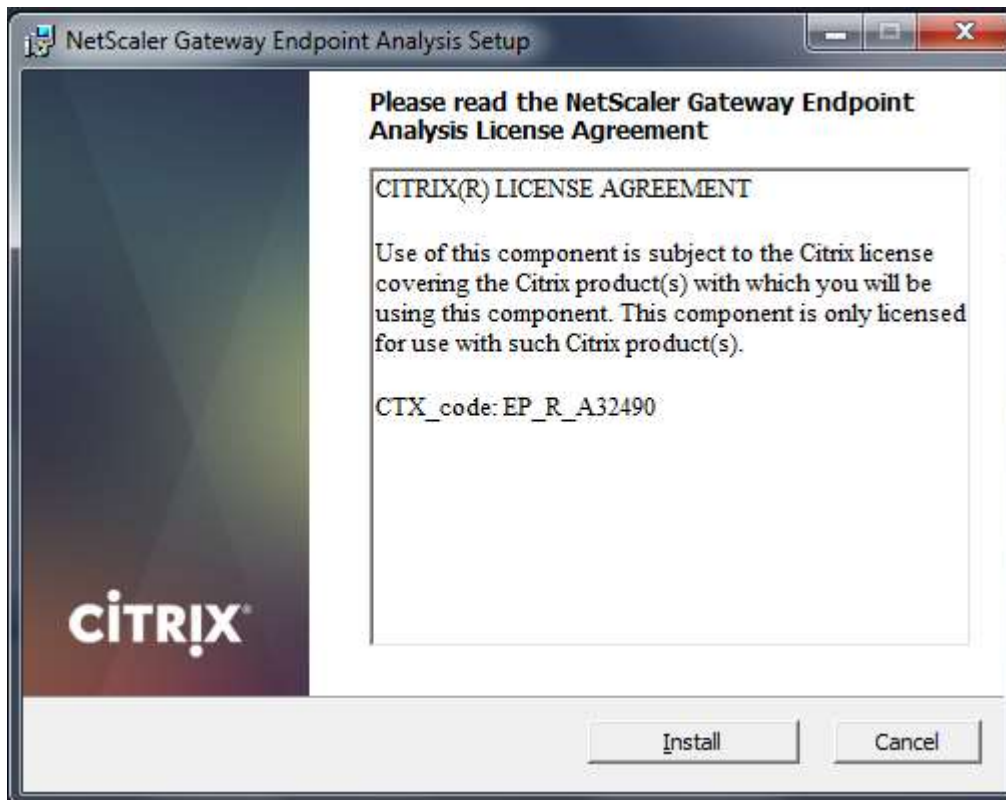
2. Click Download to install the new Endpoint Protection (EPA) client. (This is a one-time install)



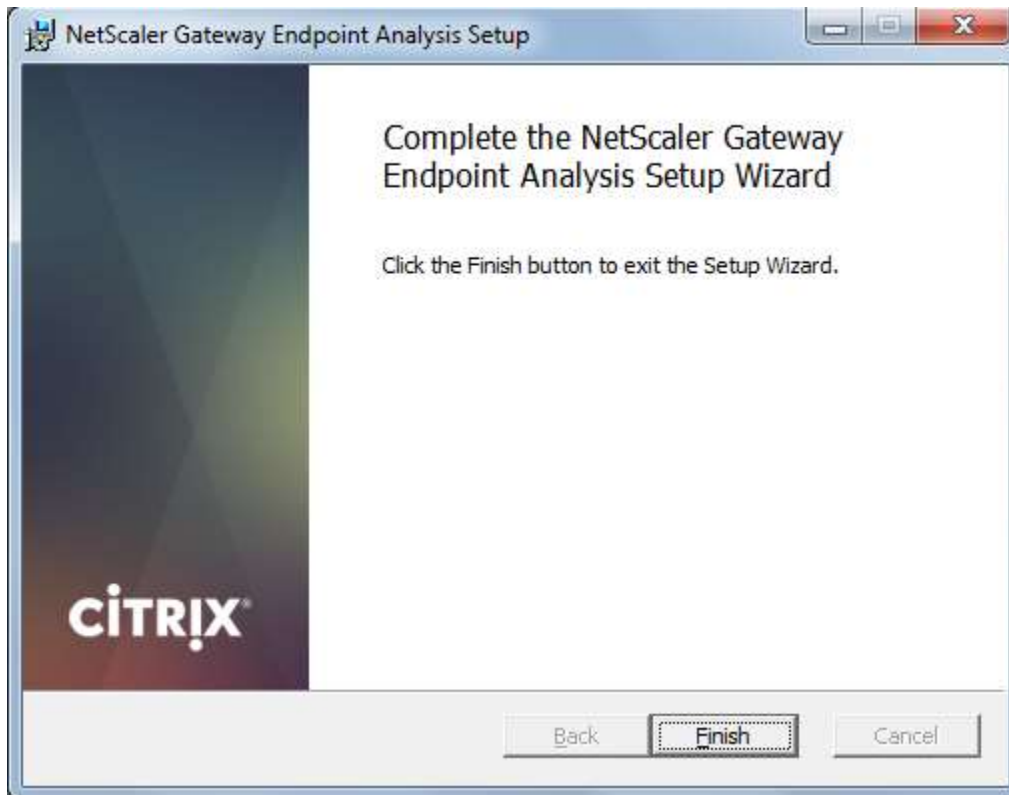
3. Click Run.



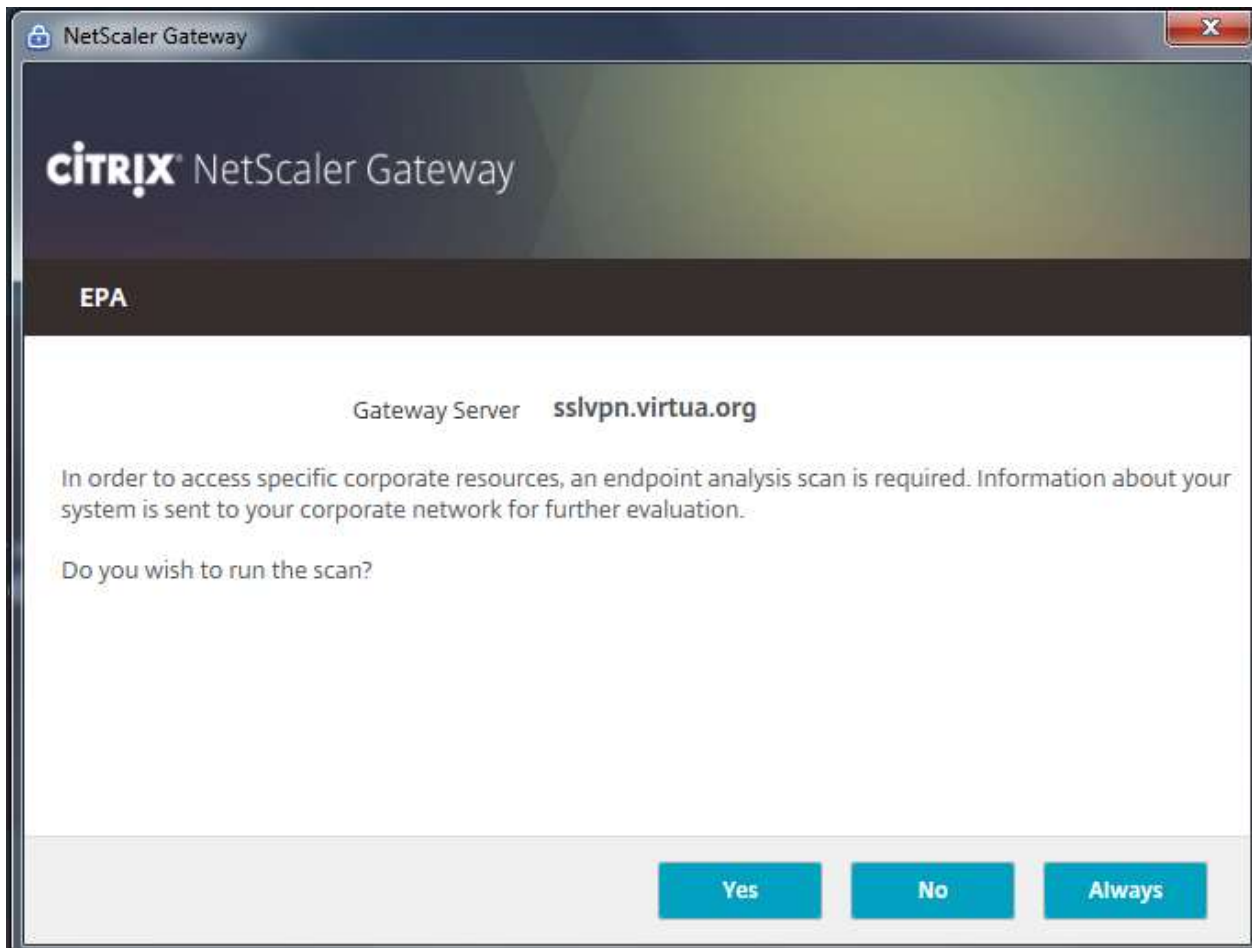
4. Click Install.



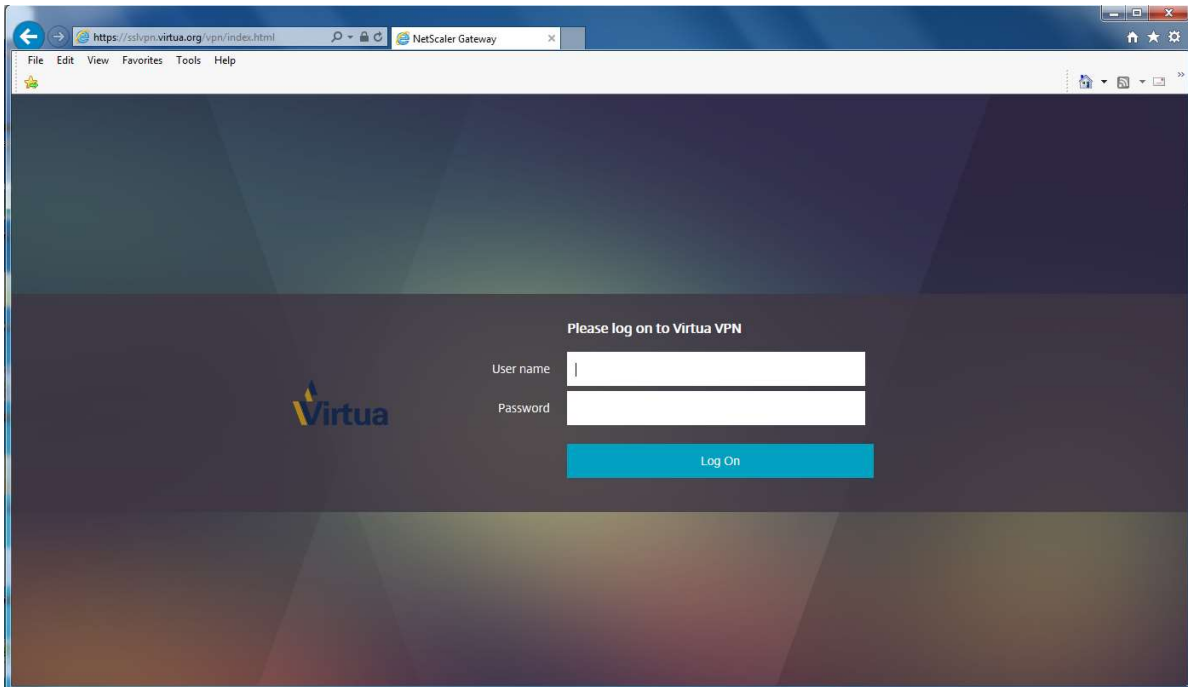
5. Click Finish.



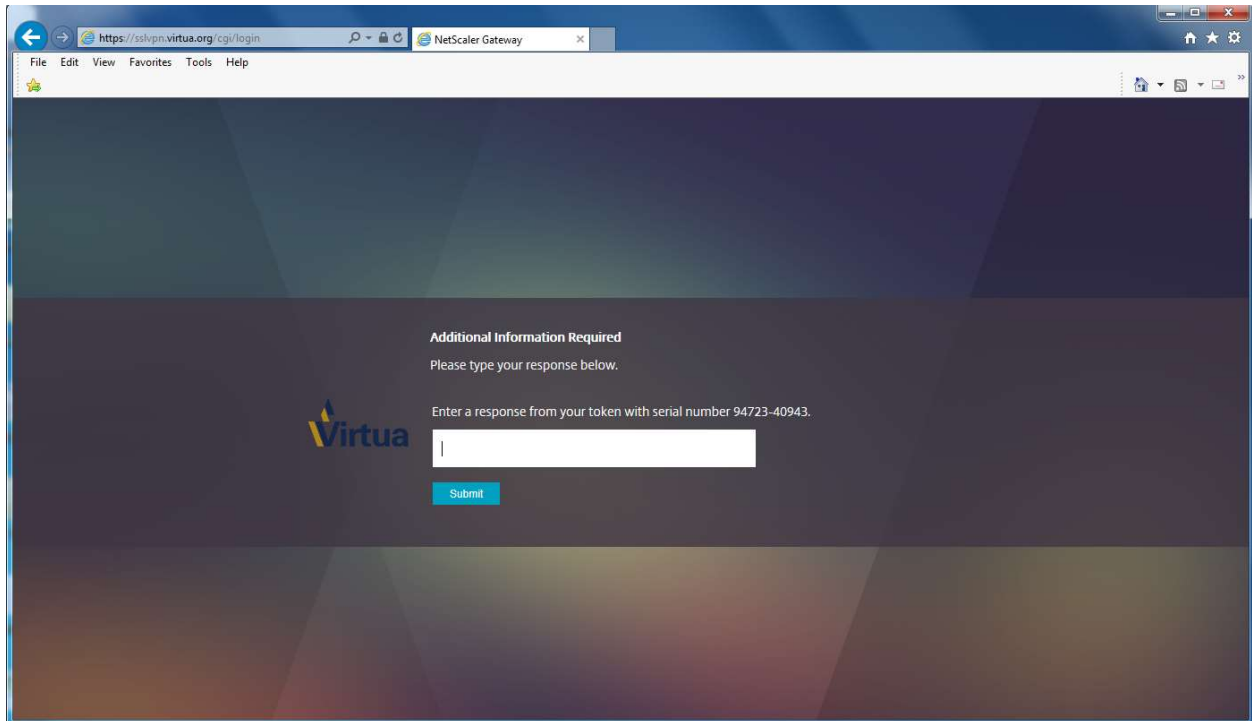
6. EPA will start its scan. Clicking Always is a one-time option for this message.



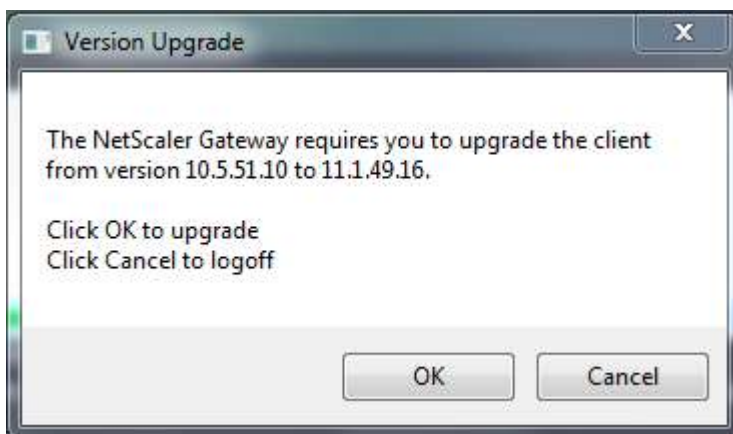
7. Type your network credentials and click Log On button.

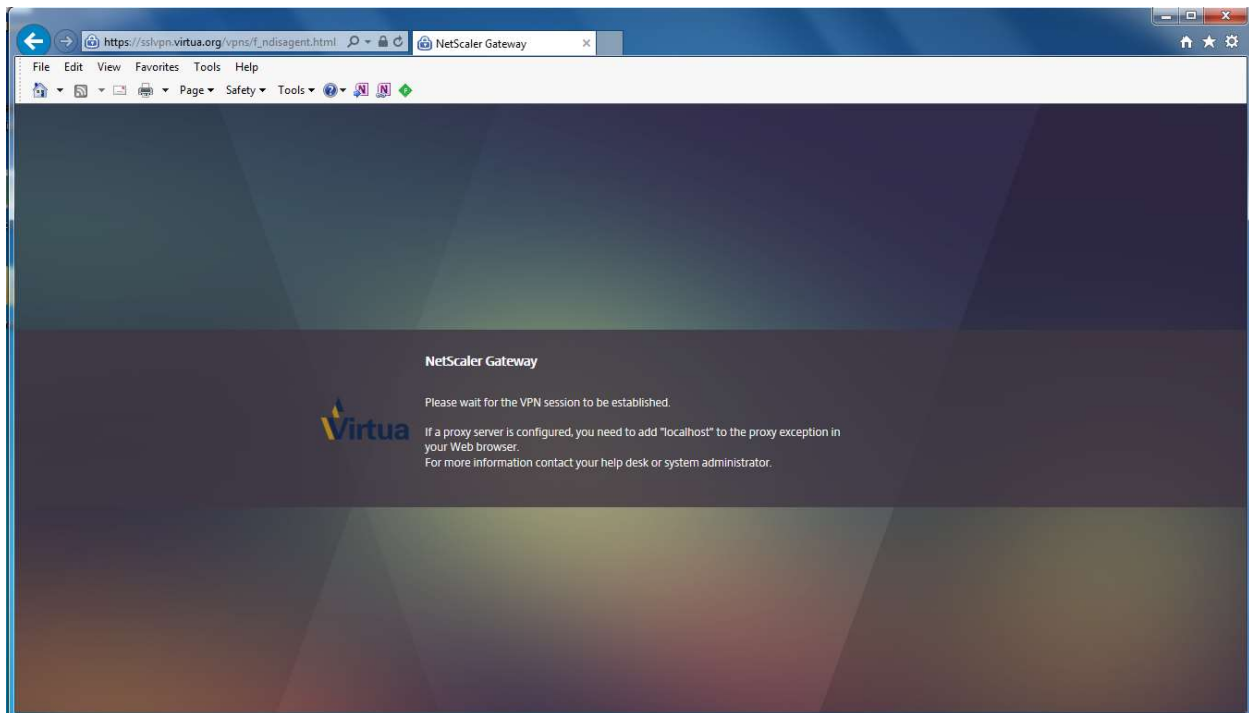


8. Enter your security code if you use a soft token or one-time password and click Submit.

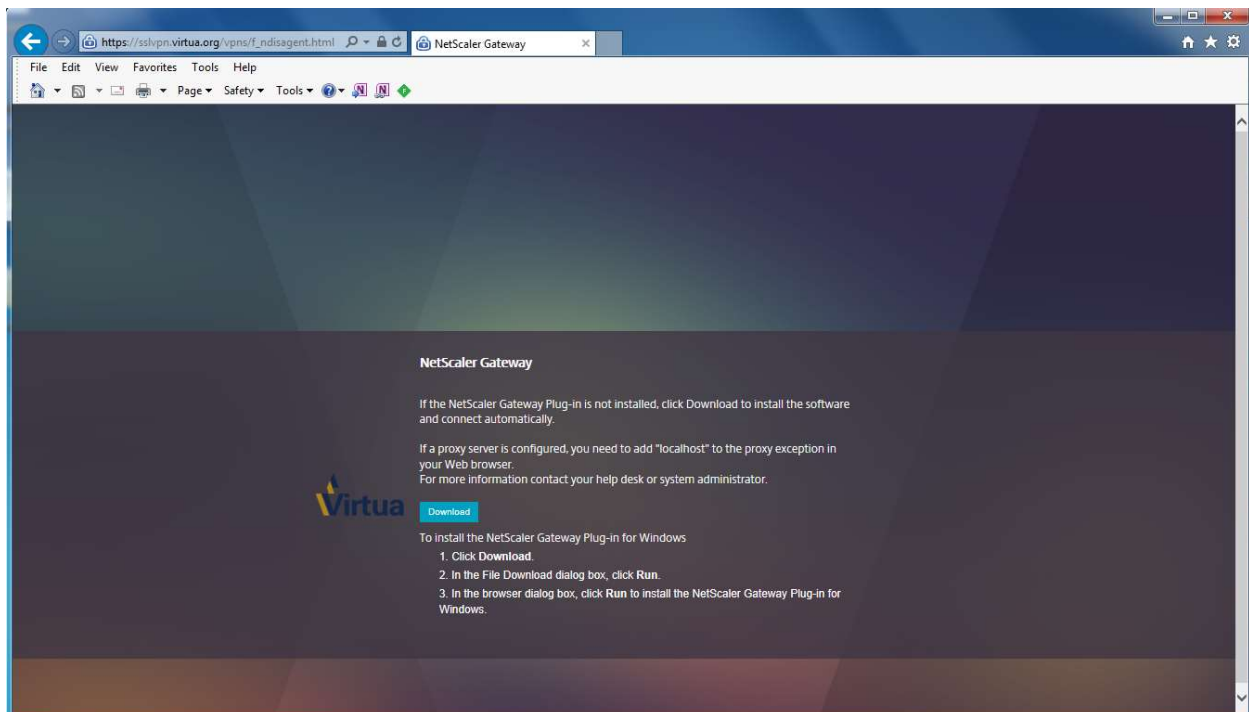


9. You may be prompted to upgrade your existing Netscaler Gateway client. (This Client should be 11.x.x or higher.) Click Ok. (This is a one-time install.)





10. Click Download to install the Netscaler Gateway Plug-In. (This is a one-time install.)

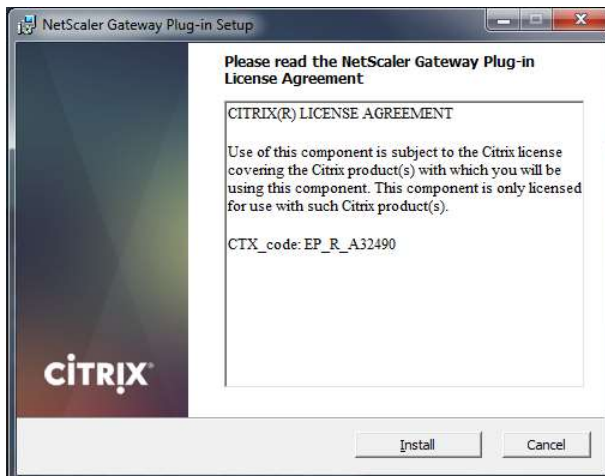




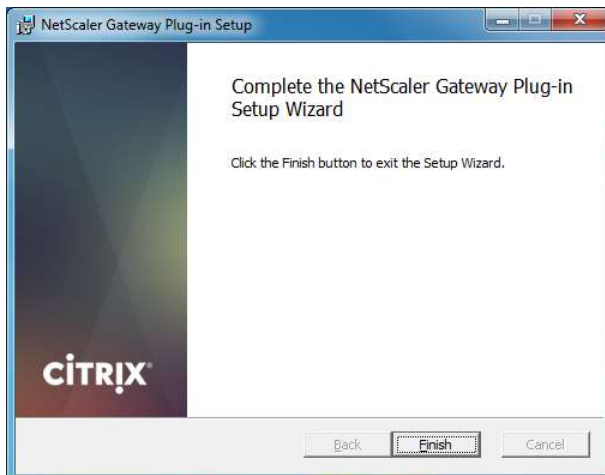
## 11. Click Run



## 12. Click Install.



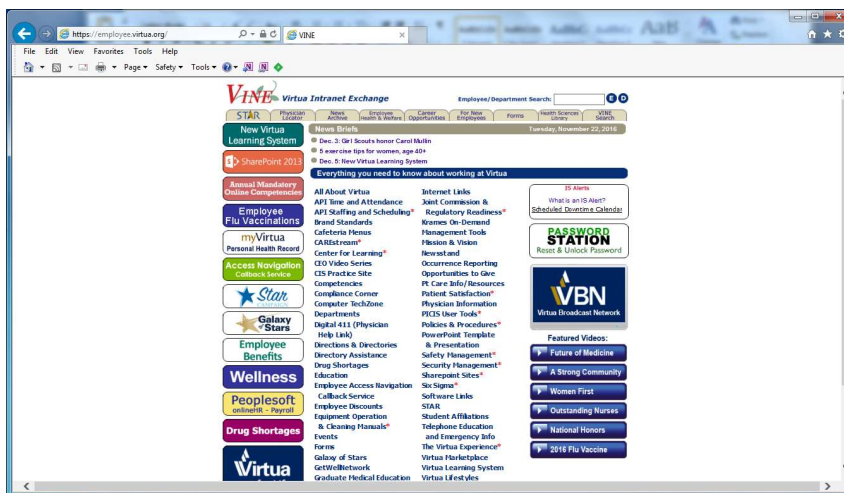
## 13. Click finish.



14. You may notice the Netscaler Gateway Starting Tunneling pop-up in the lower right system tray.



15. Once connected the browser session should be on the Virtua Intranet page.



**Note: if you have any connectivity issues your machine may need a reboot. Please reboot and try again. Also delete browser temp files, history etc.....via IE Options/General tab/Browsing History/ Delete button. Delete cache files under browsing via IE Options/General tab/Browsing History/Settings button/View Files button.**